

ACN: 37103-0010-08-201

Fast GC of 25 PAH including EPA Method 610 PAH 10 m x 0.10 mm I.D. column and 18 minutes run time

Fast GC of 25 PAH on a micro bore column

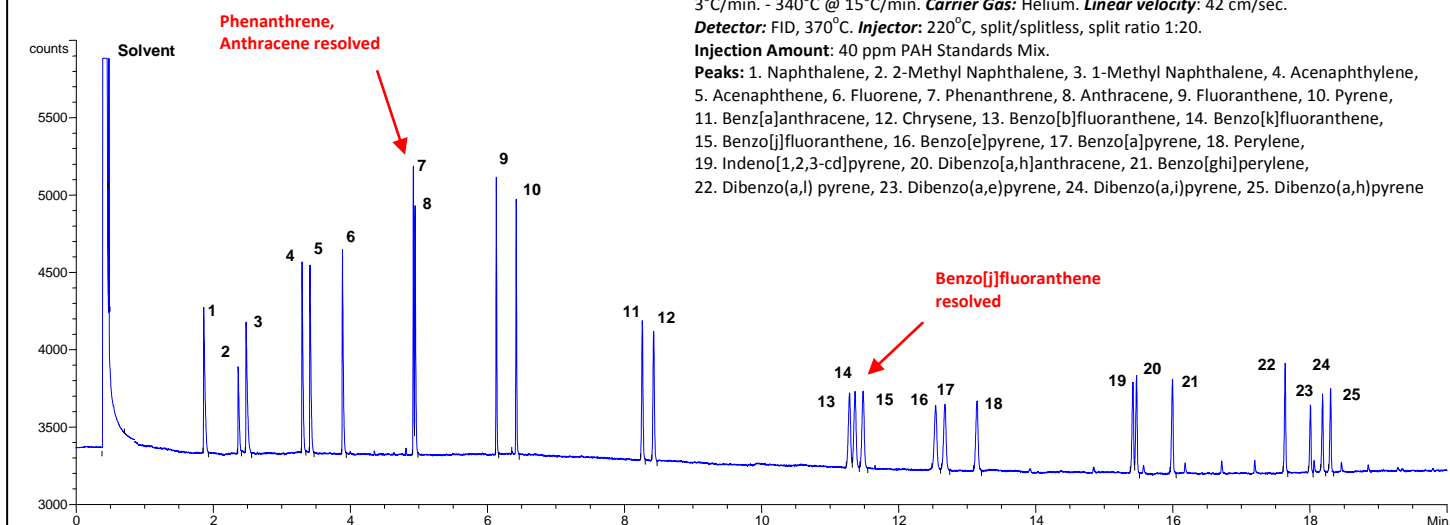
Column: NSP-PAH, 10 m x 0.10 mm x 0.10 µm film thickness. Part No. 3710-10010

Chromatographic Conditions: **Temperature Program:** 80°C - 230°C @ 25°C/min. - 250°C @ 3°C/min. - 340°C @ 15°C/min. **Carrier Gas:** Helium. **Linear velocity:** 42 cm/sec.

Detector: FID, 370°C. **Injector:** 220°C, split/splitless, split ratio 1:20.

Injection Amount: 40 ppm PAH Standards Mix.

Peaks: 1. Naphthalene, 2. 2-Methyl Naphthalene, 3. 1-Methyl Naphthalene, 4. Acenaphthylene, 5. Acenaphthene, 6. Fluorene, 7. Phenanthrene, 8. Anthracene, 9. Fluoranthene, 10. Pyrene, 11. Benz[a]anthracene, 12. Chrysene, 13. Benzo[b]fluoranthene, 14. Benzo[k]fluoranthene, 15. Benzo[j]fluoranthene, 16. Benzo[e]pyrene, 17. Benzo[a]pyrene, 18. Perylene, 19. Indeno[1,2,3-cd]pyrene, 20. Dibenzo[a,h]anthracene, 21. Benzo[ghi]perylene, 22. Dibenzo(a,i)pyrene, 23. Dibenzo(a,e)pyrene, 24. Dibenzo(a,i)pyrene, 25. Dibenzo(a,h)pyrene



Fast GC of 19 PAH including EPA Method 610 PAH 10 m x 0.10 mm I.D. column and 16 minutes run time

Fast GC of 19 PAH on an NSP-PAH micro bore column

Column: NSP-PAH, 10 m x 0.10 mm x 0.10 µm film thickness. Part No. 3710-10010

Chromatographic Conditions: **Temperature Program:** 80°C - 230°C @ 30°C/min. - 245°C @ 3°C/min. - 340°C @ 10°C/min. **Carrier Gas:** Helium. **Linear velocity:** 42 cm/sec.

Detector: FID, 370°C. **Injector:** 220°C, split/splitless, split ratio 1:20.

Injection Amount: 40 ppm PAH Standards Mix.

Peaks: 1. Naphthalene, 2. 2-Methyl Naphthalene, 3. 1-Methyl Naphthalene, 4. Acenaphthylene, 5. Acenaphthene, 6. Fluorene, 7. Phenanthrene, 8. Anthracene, 9. Fluoranthene, 10. Pyrene, 11. Benz[a]anthracene, 12. Chrysene, 13. Benzo[b]fluoranthene, 14. Benzo[k]fluoranthene, 15. Benzo[j]fluoranthene, 16. Benzo[a]pyrene, 17. Indeno[1,2,3-cd]pyrene, 18. Dibenzo[a,h]anthracene, 19. Benzo[ghi]perylene

