

ACN:60043-0010-02-302

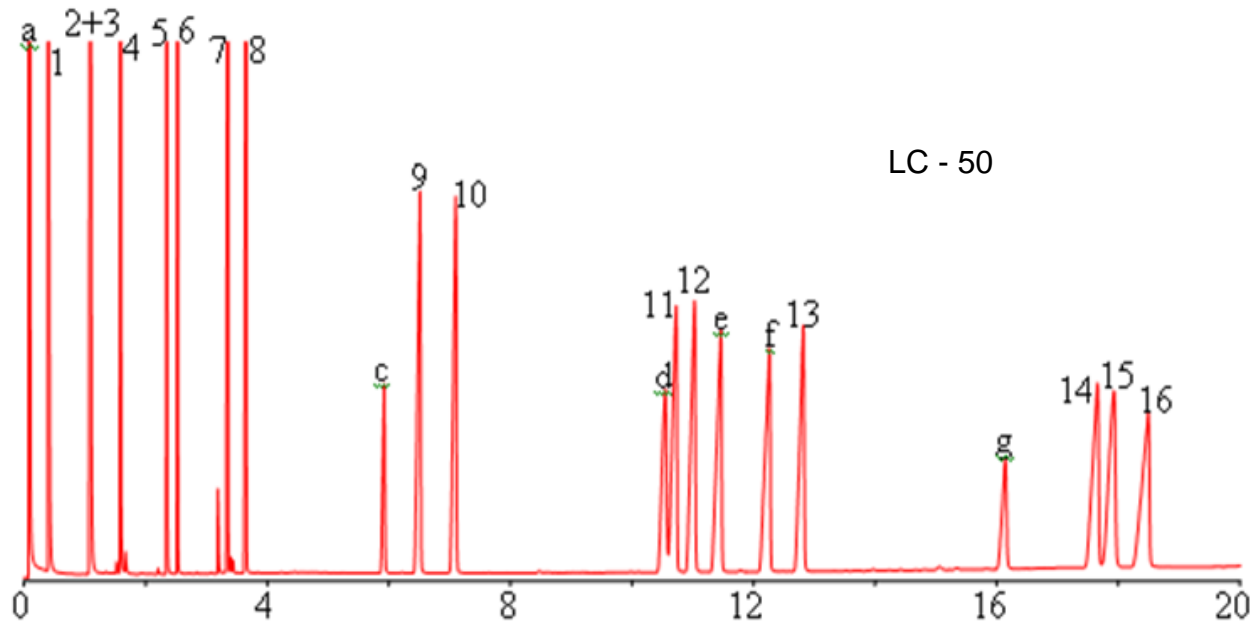


Figure: Chromatograms of 21 PAH including 16 priority PAH of USEPA Method 610

Part number :6004-0100-0010

LC Column, 4 m x 0.10 mm x 0.10 µm film thickness.

Chromatographic Conditions:

Temperature program: 100°C to 220 °C @40 °C /min, to 290 @ 5 °C /min, hold at 290 °C for 6 min.

Injector: 250°C; Split;

Pressure: Constant @ 600kPa helium;

Flow: Initial 3.1 mL/min, Average Linear Velocity 174 cm/sec, Split Ratio 20:1;

Detector: FID, 300°C, hydrogen 40mL/min, air 450mL/min, make-up 45mL/min

Peaks: 1. Naphthalene, 2. Acenaphthylene, 3. Acenaphthene, 4. Fluorene, 5. Phenanthrene,

6. Anthracene, 7. Fluoranthene, 8. Pyrene, 9. Benz[a]anthracene, 10. Chrysene,

11. Benzo[b]fluoranthene, 12. Benzo[k]fluoranthene, 13. Benzo[a]pyrene,

14. Indeno[1,2,3-cd]pyrene, 15. Dibenz[a,h]anthracene, 16. Benzo[ghi]perylene.

a: Solvent, c: Triphenylene, d: Benzo(i)fluoranthene, e: Benzo(e)pyrene, f: Perylene, g: Dibenz(a,c)anthracene.